
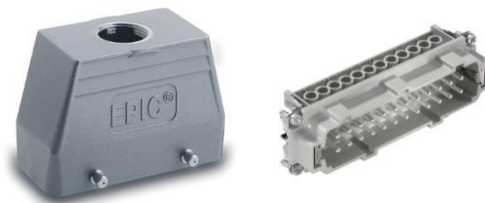


75009650	<b>DATA SHEET</b>	
Valid from: 25.02.2019	<b>EPIC® Kit H-BE 24 SS TG M25</b>	

## Description

- Optimally matched components.
- H-BE inserts with screw termination up to 2.5 mm<sup>2</sup> connection cross-section.
- The possibility of using higher voltages and currents as well as high reliability characterizes the EPIC® H-BE series.
- Reduced order costs. No wrong orders.



## Components

Item number of the combination	75009650
Housing	EPIC® H-B 24 TG M25 (19121000)
Insert	EPIC® H-BE 24 SS DR (10196000)


## General characteristics

Insert	H-BE 24
Gender	Male
Connection type	Screw termination
Connection cross-section	0.5 – 2.5 mm <sup>2</sup>
Wire protection	Yes
Number of contacts	24 + PE
Contact diameter	2,5 mm
Mating cycles	500
Temperature range	-40°C to +100°C, short-term up to +125 °C
Housing	Hood
Gland body	No
Cable entry	1x straight
Locking	Bolt for double lever
Protection (DIN EN 60529)	IP 65 (mated and latched)
Protection (NEMA 250/UL50E)	4 and 12 (mated and latched)

## Electrical characteristics

Rated voltage, IEC	500 V
Rated voltage, UL	600 V
Rated voltage, CSA	600 V
Rated impulse voltage	6 kV
Rated current, IEC	16 A
Rated current, UL	16 A
Rated current, CSA	16 A
Contact resistance	< 2 mOhm
Degree of soiling	3

Creator: BEGE1/PDP Released: IVSE1/PDP	Dokument: DB75009650EN Version: 02	Page 1 of 3
---	---------------------------------------	-------------

75009650	<b>DATA SHEET</b>	
Valid from: 25.02.2019	<b>EPIC® Kit H-BE 24 SS TG M25</b>	

## Materials/Surfaces

Contacts	Copper alloy, hard silver plated
Insulating body	PC
Flammability class according to UL94	V0
Housing	Aluminium alloy, powder-coated (grey)
Locking	Steel, zinc-plated
Housing seal	-
Gland body	-

## Approvals

VDE-Approval, VDE-REG.-Nr.	B437
UL File Nummer	E75770
CSA File Nummer	053004

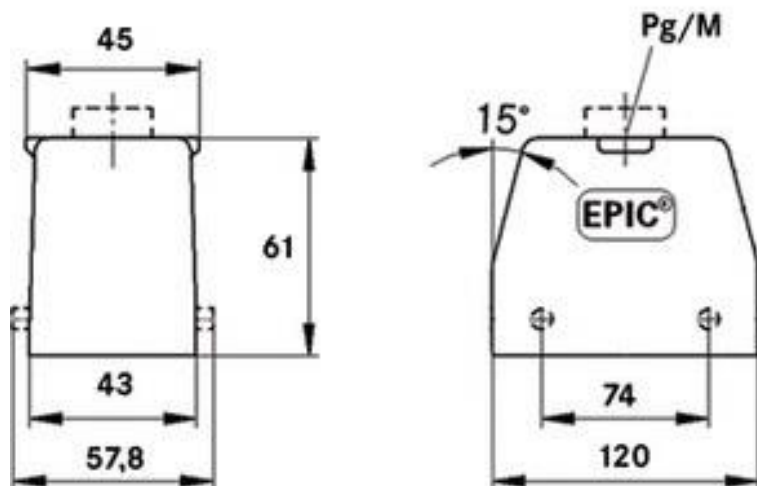


## Standards


Safety standards	IEC 61984; UL 1977; CSA-C22.2
------------------	-------------------------------

## Technical drawings

Housing dimensions



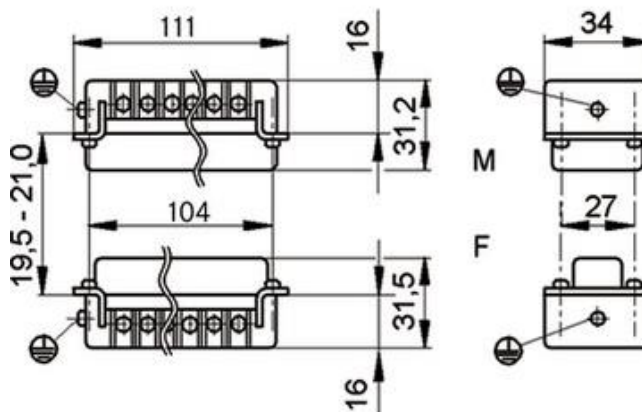
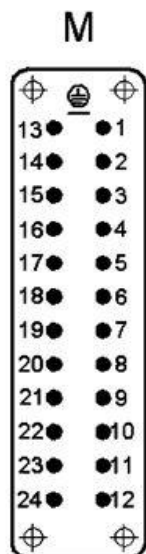
Creator: BEGE1/PDP Released: IVSE1/PDP	Dokument: DB75009650EN Version: 02	Page 2 of 3
---	---------------------------------------	-------------

75009650	<b>DATA SHEET</b>	
Valid from: 25.02.2019	<b>EPIC® Kit H-BE 24 SS TG M25</b>	

Insert

Pin assignment

Dimensions



Automation



Industrial machinery and plant engineering



Mechanical resistance



Robust



Waterproof



Temperature-resistant

### Info

Universal, robust metal housings

Multifunctional insert for versatile applications

### Application range

Plant engineering, control engineering, plastics industry, light & sound technology

### Remark

Photographs are not to scale and do not represent detailed images of the respective products.

Creator: BEGE1/PDP Released: IVSE1/PDP	Dokument: DB75009650EN Version: 02	Page 3 of 3
---	---------------------------------------	-------------

75009651	<b>DATA SHEET</b>	
Valid from: 25.02.2019	<b>EPIC® Kit H-BE 24 SS TS M25</b>	

## Description

- Optimally matched components.
- H-BE inserts with screw termination up to 2.5 mm<sup>2</sup> connection cross-section.
- The possibility of using higher voltages and currents as well as high reliability characterizes the EPIC® H-BE series.
- Reduced order costs. No wrong orders.



## Components

++Item number of the combination	75009651
Housing	EPIC® H-B 24 TS M25 (19113000)
Insert	EPIC® H-BE 24 SS DR (10196000)

## General characteristics

Insert	H-BE 24
Gender	Male
Connection type	Screw termination
Connection cross-section	0.5 – 2.5 mm <sup>2</sup>
Wire protection	Yes
Number of contacts	24 + PE
Contact diameter	2,5 mm
Mating cycles	500
Temperature range	-40°C to +100°C, short-term up to +125 °C
Housing	Hood
Gland body	Yes
Cable entry	1x lateral
Locking	Bolt for double lever
Protection (DIN EN 60529)	IP 65 (mated and latched)
Protection (NEMA 250/UL50E)	4 and 12 (mated and latched)

## Electrical characteristics

Rated voltage, IEC	500 V
Rated voltage, UL	600 V
Rated voltage, CSA	600 V
Rated impulse voltage	6 kV
Rated current, IEC	16 A
Rated current, UL	16 A
Rated current, CSA	16 A
Contact resistance	< 2 mOhm
Degree of soiling	3

Creator: BEGE1/PDP Released: IVSE1/PDP	Dokument: DB75009651EN Version: 02	Page 1 of 3
---	---------------------------------------	-------------

75009651	<b>DATA SHEET</b>	
Valid from: 25.02.2019	<b>EPIC® Kit H-BE 24 SS TS M25</b>	

### Materials/Surfaces

Contacts	Copper alloy, hard silver plated
Insulating body	PC
Flammability class according to UL94	V0
Housing	Aluminium alloy, powder-coated (grey)
Locking	Steel, zinc-plated
Housing seal	-
Gland body	Brass, nickel-plated

### Approvals

VDE-Approval, VDE-REG.-Nr.	B437
UL File Nummer	E75770
CSA File Nummer	053004

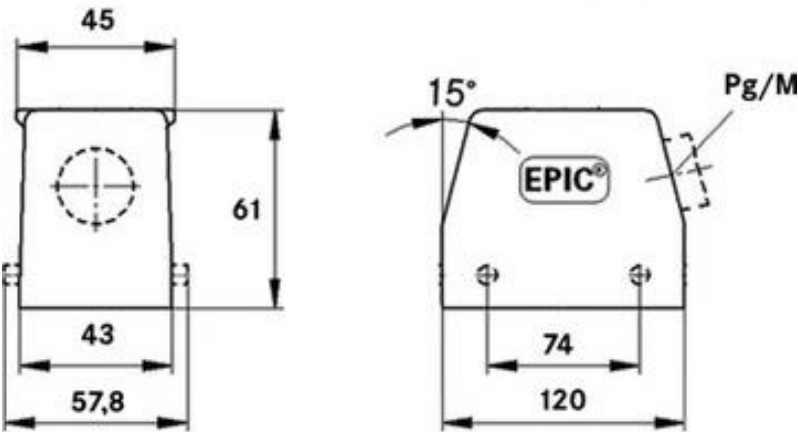


### Standards

Safety standards	IEC 61984; UL 1977; CSA-C22.2
------------------	-------------------------------

### Technical drawings

Housing dimensions



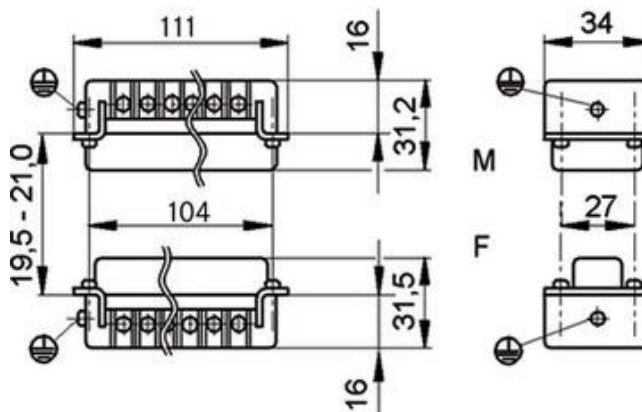
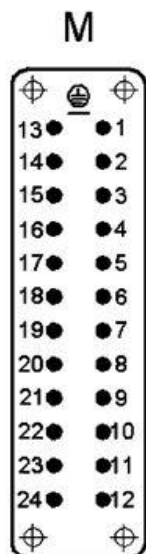
Creator: BEGE1/PDP Released: IVSE1/PDP	Dokument: DB75009651EN Version: 02	Page 2 of 3
---	---------------------------------------	-------------

75009651	<b>DATA SHEET</b>	
Valid from: 25.02.2019	<b>EPIC® Kit H-BE 24 SS TS M25</b>	

Insert

Pin assignment

Dimensions



Automation



Industrial machinery and plant engineering



Mechanical resistance



Robust



Waterproof



Temperature-resistant

### Info

Universal, robust metal housings

Multifunctional insert for versatile applications

### Application range

Plant engineering, control engineering, plastics industry, light & sound technology

### Remark

Photographs are not to scale and do not represent detailed images of the respective products.

Creator: BEGE1/PDP Released: IVSE1/PDP	Dokument: DB75009651EN Version: 02	Page 3 of 3
---	---------------------------------------	-------------

10102000	<b>DATA SHEET</b>	
Valid from: 17.09.2018	<b>EPIC® H-B 24 AG</b>	

## Description

- Ideal for many applications due to a wide range of housings and inserts



## General Characteristics

Series	H-B 24
Version	Panel mount base
Locking	Double lever
Protection (DIN EN 60529)	IP 65 (latched)
Protection (NEMA 250, UL50E)	12 (latched)
Temperature Range	-40°C to +100°C, short term up to +125°C

## Materials and Surfaces

Housing	Aluminium alloy, powder-coated, grey
Bolts	Heat-treatable steel, zinc-plated
Lever	Steel, zinc-plated
Sealing	NBR


## Approvals

VDE-Approval, VDE-REG.-Nr.	B437
----------------------------	------

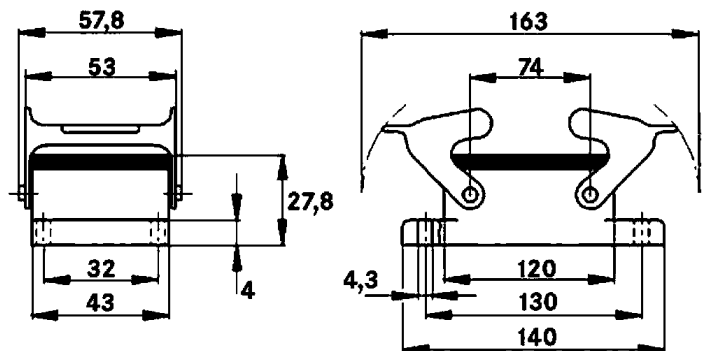
## Standard

Safety Standard	IEC 61984
-----------------	-----------

Creator: MANA2/PDP Released: IVSE1/PDP	Document: DB10102000EN Version: 01	Page 1 of 2
---	---------------------------------------	-------------

10102000	<b>DATA SHEET</b>	
Valid from: 17.09.2018	EPIC® H-B 24 AG	

## Technical Drawings



Automation



Industrial machinery and plant engineering



Mechanical resistance



Robust



Waterproof

## Info

Universal, robust metal housings size H-B 24

## Application range

Plant engineering  
Light & sound technology  
Plastics industry

## Remark

Photographs are not to scale and do not represent detailed images of the respective products.

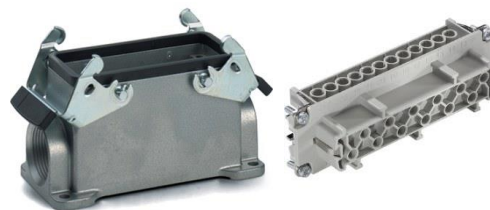
Creator: MANA2/PDP Released: IVSE1/PDP	Document: DB10102000EN Version: 01	Page 2 of 2
---	---------------------------------------	-------------



75009653	<b>DATA SHEET</b>	
Valid from: 25.02.2019	<b>EPIC® Kit H-BE 24 BS SGR M25</b>	

## Description

- Optimally matched components.
- H-BE inserts with screw termination up to 2.5 mm<sup>2</sup> connection cross-section.
- The possibility of using higher voltages and currents as well as high reliability characterizes the EPIC® H-BE series.
- Reduced order costs. No wrong orders.



## Components

Item number of the combination	75009653
Housing	EPIC® H-B 24 SGR M25 (19104000)
Insert	EPIC® H-BE 24 BS DR (10197000)

## General characteristics

Insert	H-BE 24
Gender	Female
Connection type	Screw termination
Connection cross-section	0.5 – 2.5 mm <sup>2</sup>
Wire protection	Yes
Number of contacts	24 + PE
Contact diameter	2,5 mm
Mating cycles	500
Temperature range	-40°C to +100°C, short-term up to +125 °C
Housing	Surface mount base
Gland body	-
Cable entry	1x lateral
Locking	Double lever
Protection (DIN EN 60529)	IP 65 (mated and latched)
Protection (NEMA 250/UL50E)	4 and 12 (mated and latched)

## Electrical characteristics

Rated voltage, IEC	500 V
Rated voltage, UL	600 V
Rated voltage, CSA	600 V
Rated impulse voltage	6 kV
Rated current, IEC	16 A
Rated current, UL	16 A
Rated current, CSA	16 A
Contact resistance	< 2 mOhm
Degree of soiling	3

Creator: BEGE1/PDP Released: IVSE1/PDP	Dokument: DB75009653EN Version: 02	Page 1 of 3
---	---------------------------------------	-------------

75009653	<b>DATA SHEET</b>	
Valid from: 25.02.2019	<b>EPIC® Kit H-BE 24 BS SGR M25</b>	

### Materials/Surfaces

Contacts	Copper alloy, hard silver plated
Insulating body	PC
Flammability class according to UL94	V0
Housing	Aluminium alloy, powder-coated (grey)
Locking	Steel, zinc-plated
Housing seal	NBR
Gland body	-

### Approvals

VDE-Approval, VDE-REG.-Nr.	B437
UL File Nummer	E75770
CSA File Nummer	053004

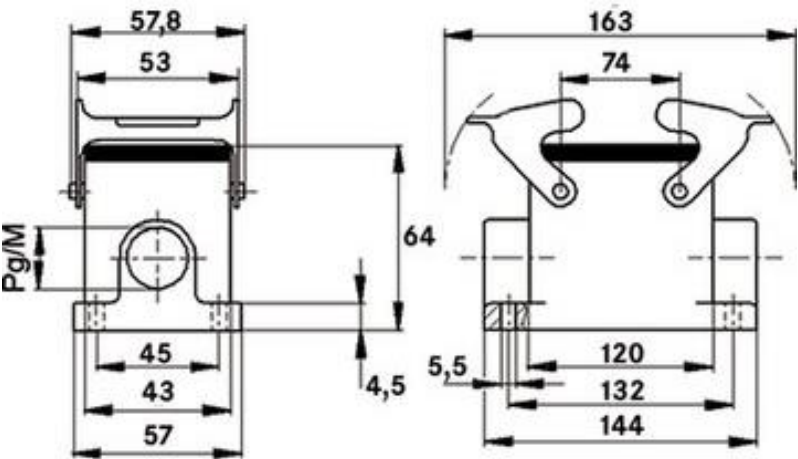


### Standards

Safety standards	IEC 61984; UL 1977; CSA-C22.2
------------------	-------------------------------

### Technical drawings

Housing dimensions

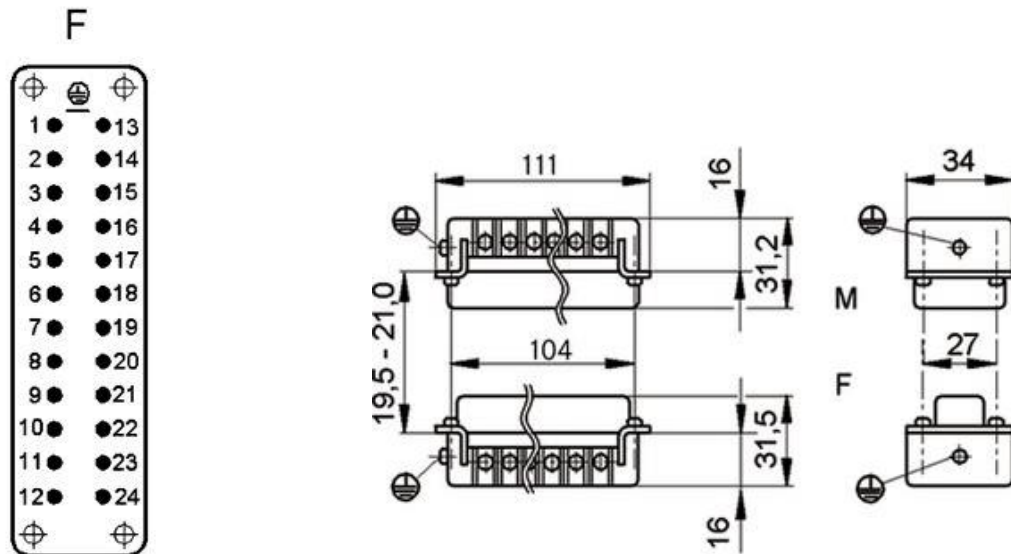


75009653	<b>DATA SHEET</b>	
Valid from: 25.02.2019	<b>EPIC® Kit H-BE 24 BS SGR M25</b>	

Insert

Pin assignment

Dimensions



Automation



Industrial machinery and plant engineering



Mechanical resistance



Robust



Waterproof



Temperature-resistant

## Info

Universal, robust metal housings

Multifunctional insert for versatile applications


## Application range

Plant engineering, control engineering, plastics industry, light & sound technology

## Remark

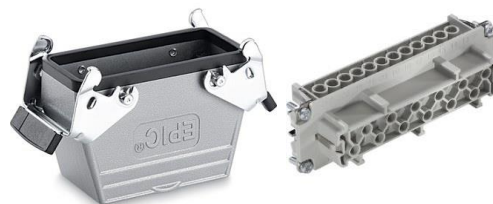
Photographs are not to scale and do not represent detailed images of the respective products.

Creator: BEGE1/PDP Released: IVSE1/PDP	Dokument: DB75009653EN Version: 02	Page 3 of 3
---	---------------------------------------	-------------

75009654	<b>DATA SHEET</b>	
Valid from: 25.02.2019	<b>EPIC® Kit H-BE 24 BS TBF M25</b>	

## Description

- Optimally matched components.
- H-BE inserts with screw termination up to 2.5 mm<sup>2</sup> connection cross-section.
- The possibility of using higher voltages and currents as well as high reliability characterizes the EPIC® H-BE series.
- Reduced order costs. No wrong orders.



## Components

Item number of the combination	75009654
Housing	EPIC® H-B 24 TBF M25 (19127000)
Insert	EPIC® H-BE 24 BS DR (10197000)


## General characteristics

Insert	H-BE 24
Gender	Female
Connection type	Screw termination
Connection cross-section	0.5 – 2.5 mm <sup>2</sup>
Wire protection	Yes
Number of contacts	24 + PE
Contact diameter	2,5 mm
Mating cycles	500
Temperature range	-40°C to +100°C, short-term up to +125 °C
Housing	Cable coupler hood
Gland body	No
Cable entry	1x straight
Locking	Double lever
Protection (DIN EN 60529)	IP 65 (mated and latched)
Protection (NEMA 250/UL50E)	4 and 12 (mated and latched)

## Electrical characteristics

Rated voltage, IEC	500 V
Rated voltage, UL	600 V
Rated voltage, CSA	600 V
Rated impulse voltage	6 kV
Rated current, IEC	16 A
Rated current, UL	16 A
Rated current, CSA	16 A
Contact resistance	< 2 mOhm
Degree of soiling	3

Creator: BEGE1/PDP Released: IVSE1/PDP	Dokument: DB75009654EN Version: 02	Page 1 of 3
---	---------------------------------------	-------------

75009654	<b>DATA SHEET</b>	
Valid from: 25.02.2019	<b>EPIC® Kit H-BE 24 BS TBF M25</b>	

## Materials/Surfaces

Contacts	Copper alloy, hard silver plated
Insulating body	PC
Flammability class according to UL94	V0
Housing	Aluminium alloy, powder-coated (grey)
Locking	Steel, zinc-plated
Housing seal	NBR
Gland body	-

## Approvals

VDE-Approval, VDE-REG.-Nr.	B437
UL File Nummer	E75770
CSA File Nummer	053004

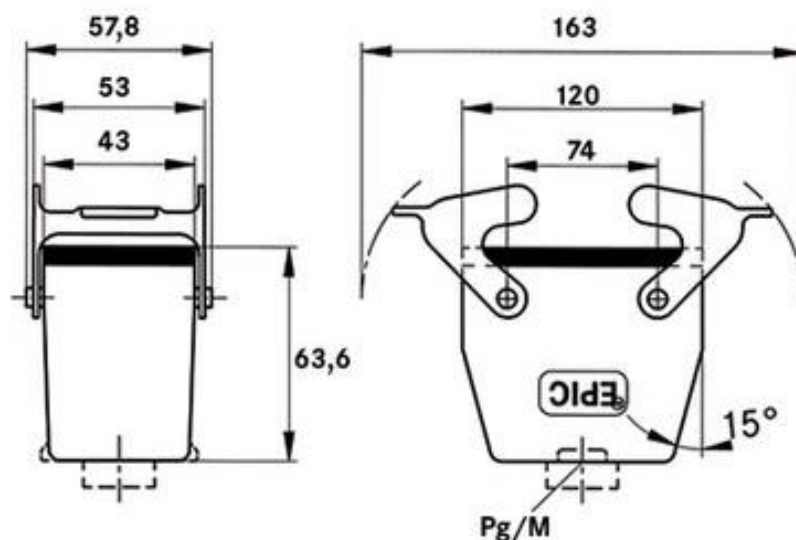


## Standards


Safety standards	IEC 61984; UL 1977; CSA-C22.2
------------------	-------------------------------

## Technical drawings

Housing dimensions



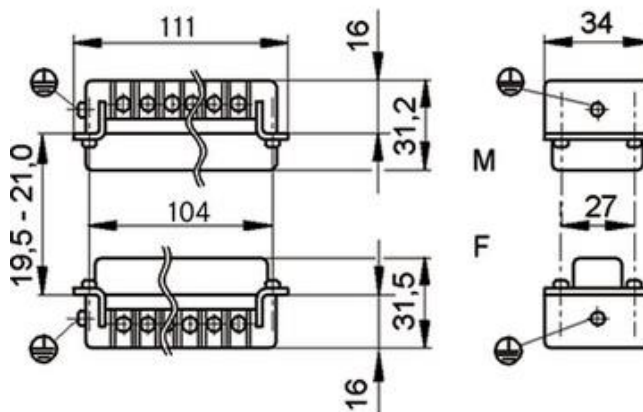
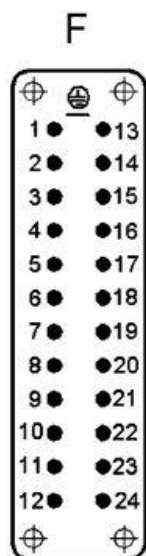
Creator: BEGE1/PDP Released: IVSE1/PDP	Dokument: DB75009654EN Version: 02	Page 2 of 3
---	---------------------------------------	-------------

75009654	<b>DATA SHEET</b>	
Valid from: 25.02.2019	<b>EPIC® Kit H-BE 24 BS TBF M25</b>	

Insert

Pin assignment

Dimensions



Automation



Industrial machinery and plant engineering



Mechanical resistance



Robust



Waterproof



Temperature-resistant

### Info

Universal, robust metal housings

Multifunctional insert for versatile applications

### Application range

Plant engineering, control engineering, plastics industry, light & sound technology

### Remark

Photographs are not to scale and do not represent detailed images of the respective products.

Creator: BEGE1/PDP Released: IVSE1/PDP	Dokument: DB75009654EN Version: 02	Page 3 of 3
---	---------------------------------------	-------------